



Maximum Strain



Deep Drawing Cup Test

Universal Sheet Metal Testing Machine Model 145



Square Deep Drawing Cup Test



**Software for
Control, Adjustment,
Documentation and Filing
of Measuring Data**

testing equipment for quality management

ERICHSEN
since 1910

Technical Description

**NAKAJAMA-Test
MARZINIAK-Test
Bulge Test**

**Extensive
Tools / Accessories**

**With
electro-hydraulic Drive
and PLC**

Product

The **Models 145-60 and 145-100** belongs to the top-of-the-line models of our sheet metal testing machines. Depending on the demand, there are two versions available: with a drawing force of 600 kN or 1000 kN, including an increased blanking force and blank holder force for blank diameters up to 220 mm. The testing machines are equipped with electro-hydraulic drive, fully automatic test sequence and switch-off at specimen failure.

Application

This Sheet Metal Testing Machine is not only ideal for the effortless, quick and accurately all important and known-deep drawing tests for ferrous and non-ferrous metals, it is also designed for a large number of additional technological investigations:

ERICHSEN Cupping Test in accordance with

DIN EN ISO 20482	JIS Z-2247
NF A 03-602	
NF A 03-652	
ASTM E 643-09	GOST 10510
GB 4156-07	

on sheet and strip 0.1 to 6.0 mm thick

ERICHSEN Deep Drawing Cup Test in accordance with

DIN EN 1669
ISO 11 531
JIS Z 2249
GB/T 15825

Square Cup Test (40 x 40 mm or 70 x 70 mm)

Bore Expanding Test (ISO 16630)

Determination of the Forming Limit Curves (FLC)

LDH Test

Deep Drawing Tests with Blankholder Quick Release (for Earing Test)

Deep Drawing Tests with Preselected Punch Stroke

Deep Drawing Test at High Temperatures up to 550 °C / 700 °C

Bulge Test in accordance with ISO 16808

ERICHSEN Cupping Test for Lacquer and Paint in accordance with DIN ISO 1520

Stamping Lacquer Test and Deep Drawing Cup Test on Coil Coatings

Special Requirements on request.

Description

The Testing Machine is driven electro-hydraulically. The test sequence is controlled automatically or manually as appropriate. A programme logic controller is used for the functions of the machine (optional computer controls). The drawing force and blankholder force as well as the drawing punch stroke are digitally displayed. The triple-acting hydraulic system in conjunction with the general design results in the following cost saving simplifications:

- ◆ Blanking press in the test head
- ◆ Hydraulic cup ejector
- ◆ Fully-automatic test sequence.

Further technical advantages:

- *Cylinder head with bayonet lock* permitting direct access to drawing dies, blanking rings, blank holders etc. and quick and convenient changing of the drawing and blanking tools
- *Infinitely variable drawing speed* once set it remains constant throughout the drawing movement, independent of any change of load
- *Cardanic drawing die retention* ensures the consistent, parallel clamping of the specimen, independent of variations in thickness.

Sheetholder Quick Release and Drawing Punch Stop (BSA-ZS)

During the drawing sequence the constant sheet holder force acts on a continuously reducing area of sheet metal under the sheet holder. The result is increasing specific pressure as the remaining flange reduces with the result that in the final phase of the drawing process and especially in cases with severe ear forming tendency, a squashing of the ear-ends will occur. For this reason, provision is made to release the sheet holder pressure completely at a preselected depth where there is no more tendency for folds to form.

The machine is provided with an digital display of the drawing punch stroke and a selector switch for either "BSA" or "ZS". When the depth of draw selected on the digital display unit is reached the drawing punch stops completely - in case of the "ZS" mode, or the sheet holder force is released - in the case of the "BSA" mode.

**Selection table for drawing dies B1/C2
(#01370132)**

valid for **ferrous and non-ferrous** material
(material type necessary for order)
Norm: ERICHSEN

Var.	Thickness s / mm	Var.	Thickness s / mm
1	0,076	28	0,85
2	0,100	29	0,90
3	0,127	30	0,95
4	0,13	31	1,00
5	0,14	32	1,10
6	0,15	33	1,15
7	0,18	34	1,20
8	0,20	35	1,25
9	0,21	36	1,30
10	0,23	37	1,40
11	0,24	38	1,50
12	0,25	39	1,60
13	0,26	40	1,70
14	0,27	41	1,80
15	0,28	42	1,90
16	0,30	43	2,00
17	0,32	44	2,10
18	0,35	45	2,20
19	0,40	46	2,30
20	0,45	47	2,40
21	0,50	48	2,50
22	0,55	49	2,60
23	0,60	50	2,65
24	0,65	51	2,70
25	0,70	52	2,8
26	0,75	53	2,9
27	0,80	54	3,0

**Selection table for drawing dies B1/C2
(#01370132)**

valid for **aluminium and aluminium alloy**
Norm: DIN EN 1669

valid for Clearance ratio 1,15 bis 1,52		valid for Clearance ratio 1,34 bis 1,76	
1	0,095 < s ≤ 0,120	1	0,080 < s ≤ 0,100
2	0,121 < s ≤ 0,150	2	0,101 < s ≤ 0,125
3	0,151 < s ≤ 0,185	3	0,126 < s ≤ 0,157
4	0,186 < s ≤ 0,235	4	0,158 < s ≤ 0,195
5	0,236 < s ≤ 0,280	5	0,196 < s ≤ 0,240
6	0,281 < s ≤ 0,345	6	0,241 < s ≤ 0,290
7	0,346 < s ≤ 0,435	7	0,291 < s ≤ 0,360
8	0,436 < s ≤ 0,535	8	0,361 < s ≤ 0,450
9	0,536 < s ≤ 0,665	9	0,451 < s ≤ 0,555
10	0,666 < s ≤ 0,800	10	0,556 < s ≤ 0,670
11	0,801 < s ≤ 0,940	11	0,671 < s ≤ 0,800
12	0,941 < s ≤ 1,130	12	0,801 < s ≤ 0,965
13	1,131 < s ≤ 1,450	13	0,966 < s ≤ 1,250
14	1,451 < s ≤ 1,900	14	1,251 < s ≤ 1,600
15	1,901 < s ≤ 2,350	15	1,601 < s ≤ 2,000
16	2,351 < s ≤ 2,900	16	2,001 < s ≤ 2,400
17	2,901 < s ≤ 3,500	17	2,401 < s ≤ 3,000

**Selection table for drawing dies B1/C2
(#01370132)**

valid for **ferrous and non-ferrous** material
(material type necessary for order)
Norm: ISO 11531

Var.	Thickness s / mm	Var.	Thickness s / mm
1	0,1 < s ≤ 0,2	4	0,8 < s ≤ 1,6
2	0,2 < s ≤ 0,4	5	1,6 < s ≤ 3,0
3	0,4 < s ≤ 0,8		

**Selection table for drawing dies B2/C3
(#01430132)**

valid for **ferrous and non-ferrous** material
(material type necessary for order)
Norm: ERICHSEN

Var.	Thickness s / mm	Var.	Thickness s / mm
1	0,076	43	2,00
2	0,100	44	2,10
3	0,127	45	2,20
4	0,13	46	2,30
5	0,14	47	2,40
6	0,15	48	2,50
7	0,18	49	2,60
8	0,20	50	2,65
9	0,21	51	2,70
10	0,23	52	2,8
11	0,24	53	2,9
12	0,25	54	3,0
13	0,26	55	3,1
14	0,27	56	3,2
15	0,28	57	3,3
16	0,30	58	3,4
17	0,32	59	3,5
18	0,35	60	3,6
19	0,40	61	3,7
20	0,45	62	3,8
21	0,50	63	3,9
22	0,55	64	4,0
23	0,60	65	4,1
24	0,65	66	4,2
25	0,70	67	4,3
26	0,75	68	4,4
27	0,80	69	4,5
28	0,85	70	4,6
29	0,90	71	4,7
30	0,95	72	4,8
31	1,00	73	4,9
32	1,10	74	5,0
33	1,15	75	5,1
34	1,20	76	5,2
35	1,25	77	5,3
36	1,30	78	5,4
37	1,40	79	5,5
38	1,50	80	5,6
39	1,60	81	5,7
40	1,70	82	5,8
41	1,80	83	5,9
42	1,90	84	6,0

**Selection table for drawing dies B2/C3
(#01430132)**

valid for **aluminium and aluminium alloy**
Norm: DIN EN 1669

valid for Clearance ratio 1,15 bis 1,52		valid for Clearance ratio 1,34 bis 1,76	
1	3,501 < s ≤ 4,100	1	3,001 < s ≤ 3,500
2	4,101 < s ≤ 5,000	2	3,501 < s ≤ 4,400
3	5,001 < s ≤ 6,000	3	4,401 < s ≤ 5,300

**Selection table for drawing dies B2/C3
(#01430132)**

valid for **ferrous and non-ferrous** material
(material type necessary for order)
Norm: ISO 11531

Var.	Thickness s / mm	Var.	Thickness s / mm
1	0,1 < s ≤ 0,2	4	0,8 < s ≤ 1,6
2	0,2 < s ≤ 0,4	5	1,6 < s ≤ 3,0
3	0,4 < s ≤ 0,8		

**Selection table for drawing dies B3/C4
(#01480132)**

valid for **ferrous and non-ferrous** material
(material type necessary for order)

Norm: ERICHSEN

(only for model 142-40-Basic)

Var.	Thickness s / mm	Var.	Thickness s / mm
1	0,076	31	1,00
2	0,100	32	1,10
3	0,127	33	1,15
4	0,13	34	1,20
5	0,14	35	1,25
6	0,15	36	1,30
7	0,18	37	1,40
8	0,20	38	1,50
9	0,21	39	1,60
10	0,23	40	1,70
11	0,24	41	1,80
12	0,25	42	1,90
13	0,26	43	2,00
14	0,27	44	2,10
15	0,28	45	2,20
16	0,30	46	2,30
17	0,32	47	2,40
18	0,35	48	2,50
19	0,40	49	2,60
20	0,45	50	2,65
21	0,50	51	2,70
22	0,55	52	2,8
23	0,60	53	2,9
24	0,65	54	3,0
25	0,70	55	3,1
26	0,75	56	3,2
27	0,80	57	3,3
28	0,85	58	3,4
29	0,90	59	3,5
30	0,95		

**Selection table for drawing dies B4
(#03980132)**

valid for **ferrous and non-ferrous** material
(material type necessary for order)

Norm: ERICHSEN

Var.	Thickness s / mm	Var.	Thickness s / mm
1	0,20	16	1,70
2	0,30	17	1,80
3	0,40	18	1,90
4	0,50	19	2,00
5	0,60	20	2,10
6	0,70	21	2,20
7	0,80	22	2,30
8	0,90	23	2,40
9	1,00	24	2,50
10	1,10	25	2,60
11	1,20	26	2,70
12	1,30	27	2,80
13	1,40	28	2,90
14	1,50	29	3,00
15	1,60		

**Selection table for drawing dies C1
(#01410132)**

valid for **ferrous and non-ferrous material**
(material type necessary for order)
Norm: ERICHSEN

Var.	Thickness s / mm	Var.	Thickness s / mm
1	0,076	43	2,00
2	0,100	44	2,10
3	0,127	45	2,20
4	0,13	46	2,30
5	0,14	47	2,40
6	0,15	48	2,50
7	0,18	49	2,60
8	0,20	50	2,65
9	0,21	51	2,70
10	0,23	52	2,8
11	0,24	53	2,9
12	0,25	54	3,0
13	0,26	55	3,1
14	0,27	56	3,2
15	0,28	57	3,3
16	0,30	58	3,4
17	0,32	59	3,5
18	0,35	60	3,6
19	0,40	61	3,7
20	0,45	62	3,8
21	0,50	63	3,9
22	0,55	64	4,0
23	0,60	65	4,1
24	0,65	66	4,2
25	0,70	67	4,3
26	0,75	68	4,4
27	0,80	69	4,5
28	0,85	70	4,6
29	0,90	71	4,7
30	0,95	72	4,8
31	1,00	73	4,9
32	1,10	74	5,0
33	1,15	75	5,1
34	1,20	76	5,2
35	1,25	77	5,3
36	1,30	78	5,4
37	1,40	79	5,5
38	1,50	80	5,6
39	1,60	81	5,7
40	1,70	82	5,8
41	1,80	83	5,9
42	1,90	84	6,0

**Selection table for blanking die ring
(#08690132)**

valid for **ferrous and non-ferrous material**
Norm: ISO 16630

Var.	Thickness s / mm	Var.	Thickness s / mm
1	$1,2 \leq s < 1,5$	7	$3,6 \leq s < 4,0$
2	$1,5 \leq s < 1,9$	8	$4,0 \leq s < 4,4$
3	$1,9 \leq s < 2,3$	9	$4,4 \leq s < 4,8$
4	$2,3 \leq s < 2,7$	10	$4,8 \leq s < 5,2$
5	$2,7 \leq s < 3,1$	11	$5,2 \leq s < 5,7$
6	$3,1 \leq s < 3,6$	12	$5,7 \leq s < 6,0$

**Selection table for drawing dies for square
cups 40x40 (#01530132)**

valid for **ferrous and non-ferrous material**
(material type necessary for order)
Norm: ERICHSEN

Var.	Thickness s / mm	Var.	Thickness s / mm
1	0,10	20	0,85
2	0,15	21	0,90
3	0,20	22	0,95
4	0,22	23	1,00
5	0,23	24	1,10
6	0,24	25	1,20
7	0,25	26	1,25
8	0,26	27	1,30
9	0,30	28	1,40
10	0,35	29	1,50
11	0,40	30	1,60
12	0,45	31	1,70
13	0,50	32	1,80
14	0,55	33	1,90
15	0,60	34	2,00
16	0,65	35	2,30
17	0,70	36	2,50
18	0,75	37	2,60
19	0,80	38	3,00

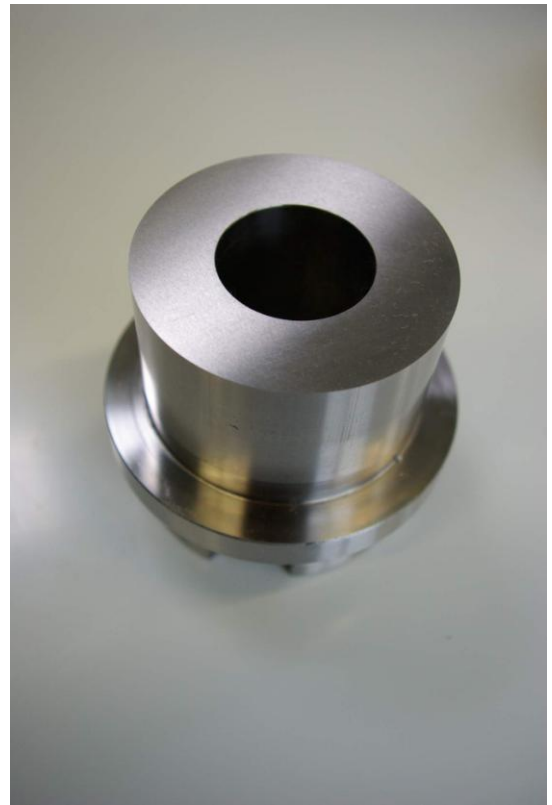
**Selection table for square cups 70x70
(#03880132)**

valid for **ferrous and non-ferrous** material
(material type necessary for order)

Norm: ERICHSEN

Var.	Thickness s / mm	Var.	Thickness s / mm
1	0,10	23	1,00
2	0,15	24	1,10
3	0,20	25	1,20
4	0,22	26	1,25
5	0,23	27	1,30
6	0,24	28	1,40
7	0,25	29	1,50
8	0,26	30	1,60
9	0,30	31	1,70
10	0,35	32	1,80
11	0,40	33	1,90
12	0,45	34	2,00
13	0,50	35	2,30
14	0,55	36	2,50
15	0,60	37	2,60
16	0,65	38	3,00
17	0,70	39	3,50
18	0,75	40	4,00
19	0,80	41	4,50
20	0,85	42	5,00
21	0,90	43	5,50
22	0,95	44	6,00

Selection table for blanking tools



Blanking tool for deep-drawing cups blank cut with punch dia 33 mm (B1):

- **consists of blanking die ring (# 01380132) and blanking punch (01390132)**

for ferrous material:

- 55 – 80 mm
- 64 mm recommended
- ISO 11531 approx. 60 mm

for non-ferrous material:

- DIN EN 1669 / 60 or 64 mm

Punching areas for sheet thicknesses of ferrous materials:

- 0,2 – 1,0 mm
- 1,1 – 2,5 mm

Punching areas for sheet thicknesses of non-ferrous materials:

- 0,1 – 0,59 mm
- 0,6 – 1,69 mm
- 1,7 – 3,0 mm

Blanking tool for deep-drawing cups blank cut with punch dia 50 mm (B2):

- consists of blanking die ring (# 01440132) and blanking punch (01450132)

for ferrous material:

- 81 - 120 mm
- 90 mm recommended
- Square cups 40 x 40 approx. 85 mm (blanking punch # 04190132)

Punching areas for sheet thicknesses of ferrous materials:

- 0,2 – 1,0 mm
- 1,1 – 2,0 mm
- 2,1 – 4,0 mm
- 4,1 – 6,0 mm

Punching areas for sheet thicknesses of non-ferrous materials:

- 0,1 – 0,59 mm
- 0,6 – 1,69 mm
- 1,7 – 3,0 mm

Blanking tool for deep-drawing cups blank cut with punch dia 75 mm (B3):

- consists of blanking die ring (# 01490132) and blanking punch (01500132)

for ferrous material:

- 121 - 170 mm
- 90 mm recommended
- Square cups 40 x 40 approx. 85 mm (blanking punch # 04190132)

Punching areas for sheet thicknesses of ferrous materials:

- 0,2 – 1,0 mm
- 1,1 – 2,0 mm
- 2,1 – 4,0 mm
- 4,1 – 6,0 mm

Punching areas for sheet thicknesses of non-ferrous materials:

- 0,1 – 0,59 mm
- 0,6 – 1,69 mm
- 1,7 – 3,0 mm

Blanking tool for deep-drawing cups blank cut with punch dia 100 mm (B4):

- consists of blanking die ring (# 01490132) and blanking punch (01500132)

for ferrous material:

- 175 - 220 mm
- 180 mm recommended
- Square cups 70 x 70 approx. 130 mm (blanking punch # 04200132)

Punching areas for sheet thicknesses of ferrous materials:

- 0,2 – 1,0 mm
- 1,1 – 2,0 mm
- 2,1 – 4,0 mm
- 4,1 – 6,0 mm

Punching areas for sheet thicknesses of non-ferrous materials:

- 0,1 – 0,59 mm
- 0,6 – 1,69 mm
- 1,7 – 3,0 mm

Further Universal Sheet Metal Testing Machines supplied by ERICHSEN:

Electro-hydraulically driven Sheet Metal Testing Machine with Automatic Controls – Model 134
(drawing force 120 kN)



Universal Sheet Metal Testing Machine with Automatic Test Sequence - Model 142-Basic
(drawing force 200 kN or 400 kN) – *compact design*



Universal Sheet Metal Testing Machine with Automatic Test Sequence - Model 142
(drawing force 200 kN or 400 kN)



Universal Sheet Metal Testing Machine for Research, Development and In-process Testing - Model 146
(drawing force 600 kN or 1000 kN)

